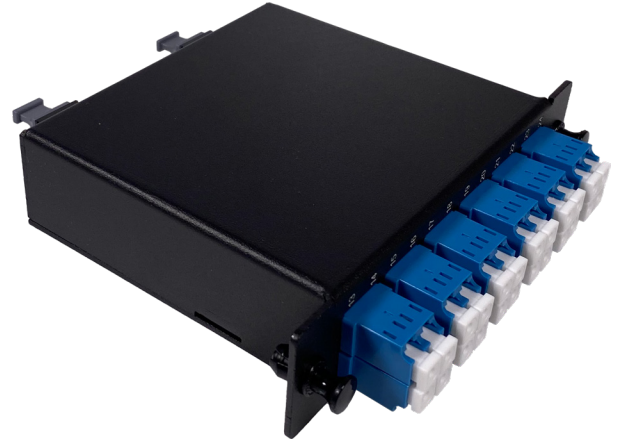


# PrecisionFlex™ LGX Cassettes

PrecisionFlex™ LGX Cassettes are standard LGX-sized cassettes for use with Sumitomo Electric Lightwave's PrecisionFlex™ LGX Patch Panels or any LGX-compatible panel. Available with up to 3 MPO/MTP input ports and 24 LC Duplex outputs. Its powder-coated steel-bodied cassettes provide excellent protection for this interconnect. Available in a wide range of configurations, the PrecisionFlex™ LGX Cassette provides for a simple and straightforward solution for rack needs.



## FEATURES & BENEFITS

### 1. LGX Footprint-Compatible Frame

- fits 3 cassettes per single-rack unit
- 72 LC per 1 RU
- robust metal body

### 2. Numerous MPOs Configurations

- MPO can accommodate: 1 X 24, 2 X 12, or 3 X 8
- multiple Polarity Configuration Options; Method A, B, & C

### 3. Port Options

- handles both LC, SC, FC & ST connectors (Max. 24 LC, 12 SC, 12 FC, & 6 ST)

### 4. Multiple Fiber Types

- available in multi-mode & single-mode; OM1, OM2, OM3, OM4, & OS1

### 5. Other Features & Benefits

- MPO to MPO module options available

## ORDERING INFORMATION

**Instructions:** Create a part number by using this character set and codes.

**FT** 11 - **MP** 22 **C** 333 - **L** 4 5 - 6

1 - FRONT CONNECTOR TYPE		2 - FACE CONNECTOR COUNT		3 - FIBER TYPE		4 - REAR MPO CONNECTOR COUNT		5 - POLISH TYPE		6 - MPO CONFIGURATION METHOD	
<b>LC</b>	LC connector (max. 24 ports)	<b>08</b>	8 connector ports	<b>OM1</b>	OM1 (62.5 μm)	<b>1</b>	1 MPO	<b>Blank</b>	UPC	<b>Blank</b>	Method A
<b>SC</b>	SC connector (max. 12 ports)	<b>12</b>	12 connector ports	<b>OM2</b>	OM2 (50 μm)	<b>2</b>	2 MPO's	<b>A</b>	APC	<b>B</b>	Method B
<b>FC</b>	FC connector (max. 12 ports)	<b>24</b>	24 connector ports	<b>OM3</b>	OM3 (50 μm)	<b>3</b>	3 MPO's			<b>C</b>	Method C
<b>ST</b>	ST connector (max. 12 ports)			<b>OM4</b>	OM4 (50 μm)						
				<b>OS1</b>	OS1 (9 μm)						