

## 3K Vertical HyperScale eXchange Cabinet (3K-V-HSX)

Often one size does not fit all. That is the case when it comes to fiber-entrance cabinets. While vast cabinets with high-fiber counts are the perfect solution for large data centers, there is still a need for a spacious cabinet but a smaller number of fibers. Sumitomo Electric Lightwave has recognized this need and created a cabinet solution that brings all the benefits of the VHSX in smaller cabinet space with one-third the fiber count. The 3K VHSX Cabinet will be the transition point between outside plant cables, and indoor distribution cables allowing for a capacity of 3,456 fibers. Through its number of cable openings and features, the 3K VHSX solution will solve the needs for any private network or data center entering into or requiring a low-fiber optic distribution frame.



PART NO.	DIMENSIONS	CAPACITY
FTHFC-3K-V-SK1	21.5 x 32 x 15 in (546 x 813 x 381 mm)	<b>3,456 fibers</b> 8 trays

### FEATURES & BENEFITS

#### 1. Compact Frame

- fiber capacity of 3,456
- wall mount
- 6 areas for cable exits & entries

#### 2. Range of Shingles

- (glands sold separately)
- shingle placement left/right & top/bottom
  - eliminates any unwanted dust from entering
  - glands offer secure cable transition to inside the frame

#### 3. Integrated Work Platform

- easy to use & integrated flat surface work station for splicing & other tasks
- work surface covered in nonslip material

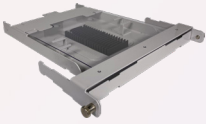
#### 4. Doors

- removable
- includes splice tray lid holder
- work platform stored inside door

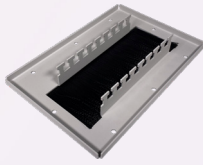
#### 5. Other Features & Benefits

- lifting plate included to move cabinet
- electric ground busbar
- RoHS & REACH compliant

## ORDERING GUIDE



FTHFC-10K-V-SPLICETRAY



FTHFC-3K-V-SK1-BRUSH-SHINGLE



FTHFC-GLAND-KIT-1.515



## ACCESSORIES & CONSUMABLES

ITEM NUMBER	ITEM NAME	DESCRIPTION
FTHFC-GLAND-KIT-1.515	Strain Relief Gland, 0.944 to 1.515 inch	strain-relief gland for cable terminal, range of 0.944" to 1.515" (24 mm to 38.5 mm)
FTHFC-GLAND-KIT-0.827	Strain Relief Gland, 0.433 to 0.827 inch	strain-relief gland for cable terminal, range of 0.433" to 0.827" (11 mm to 21 mm)
FTHFC-GLAND-KIT-0.709	Strain Relief Gland, 0.354 to 0.709 inch	strain-relief gland for cable terminal, range of 0.354" to 0.709" (9 mm to 18 mm)
FTHFC-3K-V-SK1-BRUSH-SHINGLE	Brush Shingle with Lancing Bar, Top/Bottom	high-density cabinet cable brush shingle with lancing bar, large opening, brush dust retention; compatible with top & bottom side of 3K VHSX frame
FPS-6-5P	Ribbon Splice Protector	1.58" (40 mm) ribbon splice protectors, 5 per pack
FTHFC-SOCK-5/8-75FT	Ribbon Protection Sock	ribbon-protection sock, 0.625" x 75' (16 mm x 22860 mm) spool
FTHFC-HL-TIE-30FT	Hook & Loop Cable Tie	hook & loop cable tie, 0.5" x 30' (13 mm x 9144 mm)
FTHFC-HL-3/4IN-30FT	One-Piece Hook & Loop	one-piece hook & loop, 0.75" x 30' (19 mm x 9144 mm)